

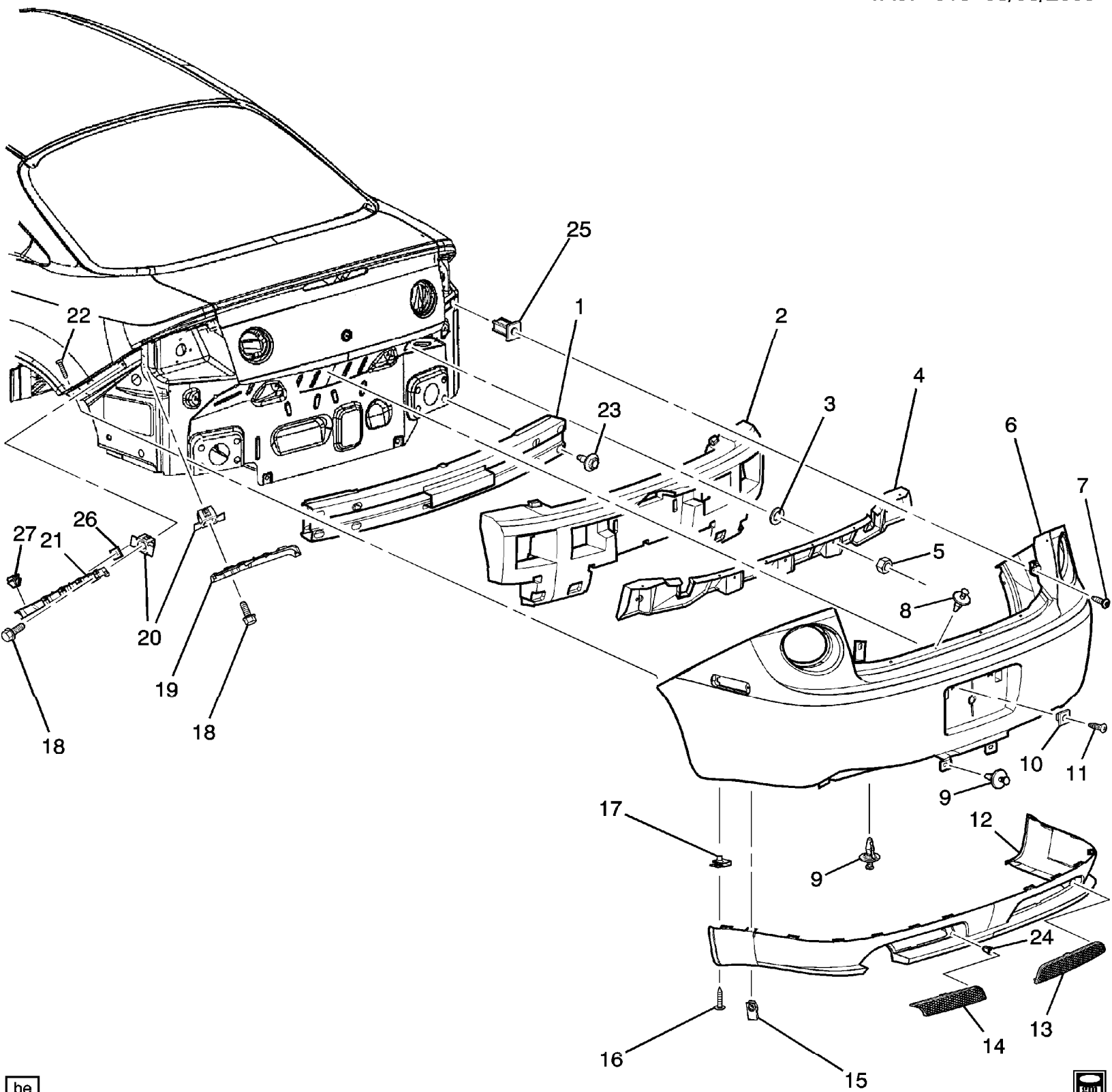
JB



**C - Chevrolet >> 2007 >> A - 1A1 - Cobalt
07 - FRAMES-SPRINGS-SHOCKS-BUMPERS
(1A07-012) 2005-2010 AP BUMPER/FRONT**

	Call	Part #	Group	H	Description	Usage	Year	Qty	Pkg
	001	<u>15232754</u>	<u>07.869</u>	L	BRACKET , FRT BPR FASCIA	A	2005-2010	01	
	001	<u>15232754</u>	<u>07.874</u>	L	BRACKET , FRT BPR FASCIA (7.869)	A	2005-2010	01	
	001	<u>15232755</u>	<u>07.869</u>	R	BRACKET , FRT BPR FASCIA	A	2005-2010	01	
	001	<u>15232755</u>	<u>07.874</u>	R	BRACKET , FRT BPR FASCIA (7.869)	A	2005-2010	01	
	002	<u>11609989</u>	<u>08.900</u>		BOLT , HEX W/FLAT WASHER, M6X1X25, 15 THD, 17 OD, 6202M STL, GMW3200, TAPTITE (FRT BPR FASCIA OTR RET)		2005-2010	04	
	003	<u>22692396</u>	<u>07.869</u>	R	BRACKET , FRT BPR IMP BAR	A	2005-2010	01	
	003	<u>22692397</u>	<u>07.869</u>	L	BRACKET , FRT BPR IMP BAR	A	2005-2010	01	
	004		NS		BRACKET , FRT BPR IMP BAR (PART OF 26)		2005-2010		
	005		NS		BAR , FRT BPR IMP (PART OF 26)		2005-2010		
	006	<u>25631448</u>	<u>07.874</u>		BOLT , FRT BPR FASCIA ENGY ABS (7.2 DIA, 22.0 O.D., 30.75 LG) (W/#3 SQ ROBERTSON DR) (7.831)	A	2005-2010	02	
	007	<u>15214862</u>	<u>07.840</u>		ABSORBER , FRT BPR FASCIA ENGY	A	2005-2010	01	
	008	<u>19120184</u>	<u>07.831</u>		FASCIA , FRT BPR (INCLS 17) (PAINT TO MATCH)	AP	2005-2010	01	
	009	<u>11515638</u>	<u>08.921</u>		NUT , U-TYPE, M4.2X1.41X10.5.5X22, .65-3.8 PNL THK, 1050, ZF (FRT BPR FASCIA)		2005-2010	06	
	010	<u>15248110</u>	<u>07.831</u>	R	BRACKET , FRT BPR FASCIA OTR (INCLS 12)	AP	2005-2010	01	
	010	<u>15248111</u>	<u>07.831</u>	L	BRACKET , FRT BPR FASCIA OTR (INCLS 12)	AP	2005-2010	01	
	011	<u>11609406</u>	<u>08.977</u>		SCREW , RD, M4.2X1.41X20, TYPE AB PT, GM6010M, GMW4205 (FRT BPR FASCIA OTR BRKT)		2005-2010	10	
	012	<u>11513599</u>	<u>08.921</u>		NUT , U-TYPE, M4.2X1.41, 0.65- 3.80 PNL THK, PZ (PART OF 10) (ACDelco #11513599)		2005-2010	10	
	013	<u>22688427</u>	<u>07.831</u>		RETAINER , FRT BPR FASCIA EXTN	AP	2005-2010	12	
	014	<u>12336084</u>	<u>07.831</u>		EXTENSION , FRT BPR FASCIA	AP	2005-2010	01	

<input type="checkbox"/>					(PAINT TO MATCH)		
<input type="checkbox"/>		015	<u>10134407</u>	<u>07.833</u>	RETAINER , FRT BPR VAL PNL (EBONY) (17.8 X 6.3 X 20.4MM) (NYLON) (ROUND PUSH-IN INCLS PUSH BUTTON LOCK) (1.272)	AP	2005-2010 04
<input type="checkbox"/>		016	<u>05973400</u>	<u>07.831</u>	RETAINER , FRT BPR FASCIA (PUSH IN) (BLACK) (25.4MM HEAD) (ROUND) (1.269)	A	2005-2010 02
<input type="checkbox"/>		017	<u>10134407</u>	<u>07.831</u>	RETAINER , FRT BPR FASCIA (PUSH ON) (PART OF 8) (EBONY) (17.8 X 6.3 X 20.4MM) (NYLON) (ROUND PUSH-IN INCLS PUSH BUTTON LOCK) (1.272)	A	2005-2010 02
<input type="checkbox"/>		018	<u>09423101</u>	<u>08.977</u>	SCREW , TAP, M6.3X1.81X16, 14.55 O.D., 7114M, PZ0R (FRT LIC PLT) (* KIT1)		2005-2010 02
<input type="checkbox"/>	  	019	<u>15253233</u>	<u>07.800</u>	BRACKET , FRT LIC PLT (5 ATTACHMENT SITES ON BRKT TO AFIX BRKT TO FASCIA)	A (VK3)	2007-2010 01
<input type="checkbox"/>	 	020	<u>15252974</u>	<u>01.303</u>	EMBLEM , FRT GRL	AP	2005-2010 01
<input type="checkbox"/>		021	<u>11561338</u>	<u>08.900</u>	BOLT , SHLDR, M6X1X22 (FRT BPR FASCIA OTR RET)		2005-2010 02
<input type="checkbox"/>		022	<u>11561838</u>	<u>01.303</u>	NUT , FRT GRL EMB	A	2005-2010 02
<input type="checkbox"/>		023	<u>22728455</u>	<u>07.831</u>	BUMPER , FRT BPR FASCIA (OVERSLAM BPR)	A	2005-2010 02
<input type="checkbox"/>	 	024	<u>05973400</u>	<u>01.269</u>	RETAINER , FRT GRL (BLACK) (25.4MM HEAD) (ROUND)	A	2005-2010 04
<input type="checkbox"/>		025	<u>11515756</u>	<u>08.900</u>	BOLT , HFH, M8X1.25X20, 17THD, 18 O.D., 10.9, 7114M (PART OF 26)		2005-2010 06
<input type="checkbox"/>	  	026	<u>25911829</u>	<u>07.831</u>	BAR , FRT BPR IMP (INCLS 4, 5, 25) (W/BRACKETS)	A	2005-2010 01
<input type="checkbox"/>		027	<u>22638717</u>	<u>07.800</u>	RIVET , FRT LIC PLT BRKT (4.85MM DIA) (* KIT1)	A (VK3)	2005-2010 03
<input type="checkbox"/>	 	028	<u>15261796</u>	<u>07.831</u>	R BRACKET , FRT BPR FASCIA UPR OTR	A	2005-2010 01
<input type="checkbox"/>	 	028	<u>15261797</u>	<u>07.831</u>	L BRACKET , FRT BPR FASCIA UPR OTR	A	2005-2010 01
<input type="checkbox"/>		K01	<u>22714456</u>	<u>07.800</u>	ATTACHMENT KIT , FRT LIC PLT (INCLS 18, 27)	A (VK3)	2005-2010 01










be



**C - Chevrolet >> 2007 >> A - 1A1 - Cobalt
07 - FRAMES-SPRINGS-SHOCKS-BUMPERS
(1A07-015) 2005-2010 AP37 BUMPER/REAR**

	Call	Part #	Group	H	Description	Usage	Year	Qty	Pkg
	001	<u>25800854</u>	<u>07.831</u>		BAR , RR BPR IMP (W/BRACKETS)	A	2005-2010	01	
	002	<u>22695268</u>	<u>07.840</u>		ABSORBER , RR BPR FASCIA ENGY	A37	2007-2010	01	
	003	<u>20733729</u>	<u>08.927</u>		WASHER , SEALING, M5, 4 I.D., 25MM O.D., 4MM THK, RUB (RR BPR FASCIA BRKT) (ACDelco #20733729)		2005-2010	05	
	004	<u>15220077</u>	<u>07.831</u>		BRACKET , RR BPR FASCIA (CENTER)	A37	2005-2010	01	
	005	<u>11609411</u>	<u>08.917</u>		NUT , HEX W/CON WA, M6X1, 5.7 THK, 16 OD, 9, GMW3200 (RR BPR FASCIA BRKT)		2005-2010	05	
	006	<u>12336078</u>	<u>07.831</u>		FASCIA , RR BPR UPR	AP37	2005-2010	01	
	007	<u>11515196</u>	<u>08.900</u>		SCREW , RND WA HD, M4.2X1.41X16, HILO SELF- TAP, 8.2 O.D., 6010M, NO (RR BPR FASCIA)		2005-2010	02	
	008	<u>11589290</u>	<u>07.831</u>		RETAINER , RR BPR FASCIA (PUSH IN) (FITS 6.5 HOLE IN 4.5 - 7.0 THK PNL, NYLON 6/6) (8.950)	A	2005-2010	04	
	009	<u>05973400</u>	<u>07.831</u>		RETAINER , RR BPR FASCIA (PUSH IN) (BLACK) (25.4MM HEAD) (ROUND) (1.269)	A	2005-2010	04	
	010	<u>03907444</u>	<u>08.921</u>		NUT , PUSH IN, SQUARE, UN THD, M9.5 SQ HOLE, NYLON (LIC PLT)		2005-2010	02	
	011	<u>09423101</u>	<u>08.977</u>		SCREW , TAP, M6.3X1.81X16, 14.55 O.D., 7114M, PZ0R (LIC PLT)		2005-2010	02	
	012	<u>12336082</u>	<u>07.831</u>		EXTENSION , RR BPR FASCIA (PAINT TO MATCH)	AP37	2005-2010	01	
	013	<u>89025744</u>	<u>07.831</u>	R	GRILLE , RR BPR FASCIA EXTN	AP	2005-2010	01	
	014	<u>89025745</u>	<u>07.831</u>	L	GRILLE , RR BPR FASCIA EXTN	AP	2005-2010	01	
	015	<u>22688427</u>	<u>07.831</u>		RETAINER , RR BPR FASCIA EXTN	AP37	2005-2010	14	
	016	<u>11504678</u>	<u>08.977</u>		SCREW , LG RD HD TORX TAP M4.2X1.41X20 SS BL OX (RR BPR FASCIA EXTN)		2005-2010	06	
	017	<u>11513599</u>	<u>08.921</u>		NUT , U-TYPE, M4.2X1.41, 0.65- 3.80 PNL THK, PZ (RR BPR FASCIA EXTN RET) (ACDelco #11513599)		2005-2010	06	
	018	<u>11589015</u>	<u>08.977</u>		BOLT , HWH W/FL WA M4.2X1.41X20, 12.5 O.D., DOG PT, 6010M, 7253M (RR BPR FASCIA BRKT)		2005-2010	08	
	019	<u>25882959</u>	<u>07.831</u>	L	BRACKET , RR BPR FASCIA (UPR BRKT - ATTACH TO QTR PNL)	A37	2007-2010	01	

<input type="checkbox"/>		<u>019</u>	<u>25882960</u>	<u>07.831</u>	R	BRACKET , RR BPR FASCIA (UPR BRKT - ATTACH TO QTR PNL)	A37	2007-2010 01
<input type="checkbox"/>		020	<u>11610510</u>	<u>08.921</u>		NUT , PUSH-IN, M4.2X1.41, 0.7-2.15 PNL THK, SAE 1050-65, GMW3359 W/BLK SEAL (RR BPR FASCIA BRKT)		2007-2010 08
<input type="checkbox"/>		<u>021</u>	<u>15277668</u>	<u>07.831</u>	R	BRACKET , RR BPR FASCIA (SI BRKT - ATTACH TO QTR PNL) (INCLS 26, 27)	A37	2005-2010 01
<input type="checkbox"/>		<u>021</u>	<u>15277669</u>	<u>07.831</u>	L	BRACKET , RR BPR FASCIA (SI BRKT - ATTACH TO QTR PNL) (INCLS 26, 27)	A37	2005-2010 01
<input type="checkbox"/>		022	<u>22549046</u>	<u>08.977</u>		SCREW , M4.2X1.4X25, 11.1 O.D., 6010M, NZ (RR BPR FASCIA OTR RET)		2005-2010 02
<input type="checkbox"/>		023	<u>11519387</u>	<u>08.900</u>		BOLT , HWASH, M8X1.25X20, 14 THD, 24 OD, GMW25 (8.8)STEEL, GMW3359, M-POINT. (RR BPR IMP BAR)		2005-2010 08
<input type="checkbox"/>		<u>024</u>	<u>11561097</u>	<u>07.831</u>		RETAINER , RR BPR FASCIA LWR (GRILLE)	AP37	2005-2010 04
<input type="checkbox"/>		<u>025</u>	<u>11561847</u>	<u>07.836</u>		NUT , RR BPR FASCIA (12MM X 16.7MM) (2.664)	A	2005-2010 02
<input type="checkbox"/>		<u>026</u>	<u>10357907</u>	<u>07.831</u>		SEAL , RR BPR FASCIA RET (PART OF 21)	A	2005-2010 01
<input type="checkbox"/>		<u>027</u>	<u>25536302</u>	<u>07.836</u>		NUT , RR BPR FASCIA (PART OF 21) (4.2 X 1.41) (TAPPING NUT) (3.430)	A	2005-2010 AR