

**Document ID# 1644918**  
**2004 Cadillac CTS**

---

# **Oil Leaking from Engine Cam/Valve Cover Seals During Extreme Cold Weather Operations (Install PCV Hose Kit and Oil Filler Cap) #05-06-01-007A - (Apr 7, 2005)**

Oil Leaking from Engine Cam/Valve Cover Seals During Extreme Cold Weather Operations (Install PCV Hose Kit and Oil Filler Cap)

2003-2004 Cadillac CTS

with 3.2L V6 Engine (VIN N -- RPO LA3)

This bulletin is being revised to update the Parts Information section. Please discard Corporate Bulletin Number 05-06-01-007 (Section 06-Engine)

## **Condition**

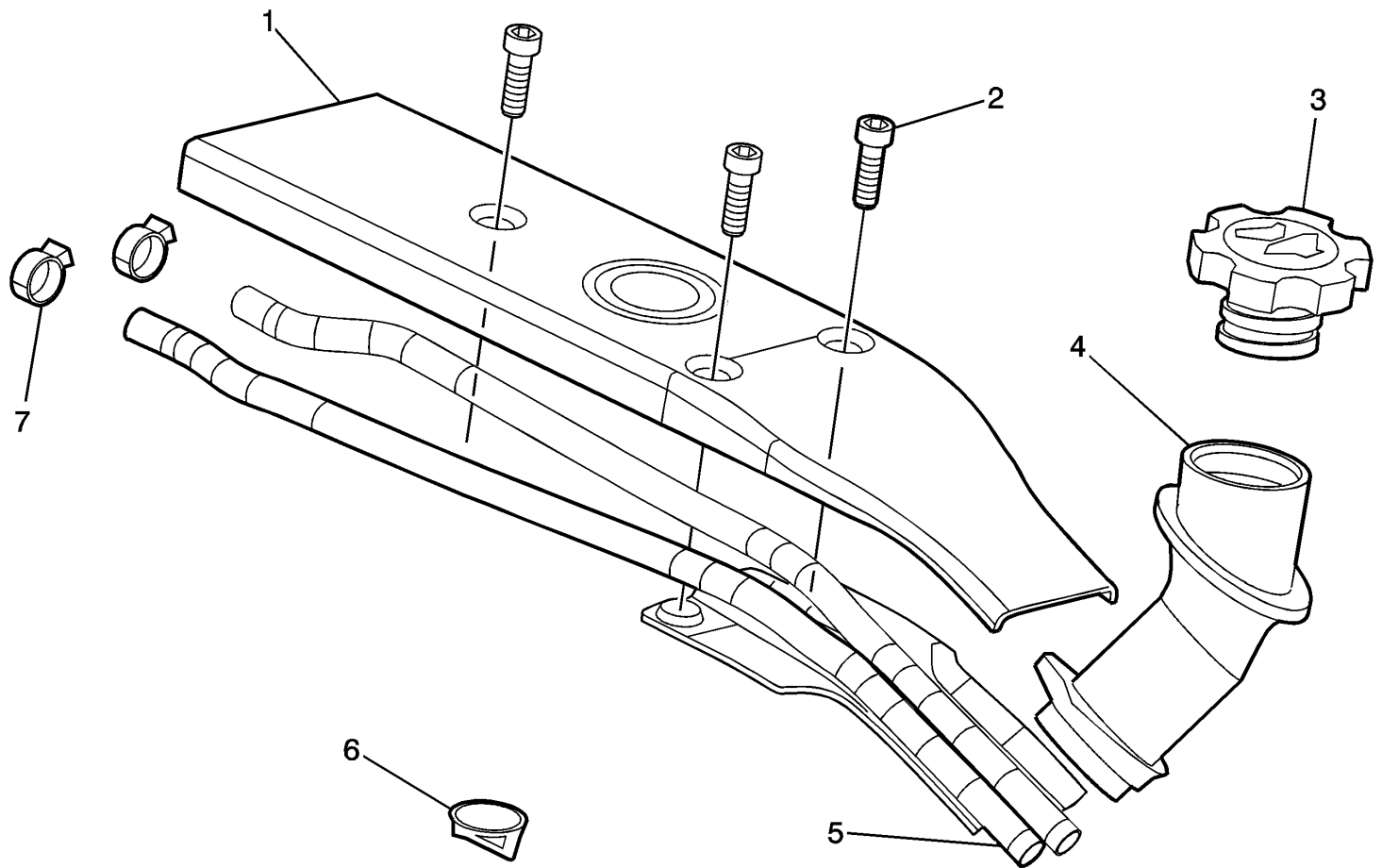
When operating in extremely cold weather conditions, some 2003-2004 vehicles with 3.2L V6 engine (VIN N - RPO LA3) may leak engine oil from the cam/valve cover seals, especially from the left side just below the oil fill hole in the cam/valve cover.

## **Cause**

This condition may be due to the closed crankcase ventilation system becoming blocked by ice. When the ventilation system is blocked, the crankcase vapors and engine oil will then vent through the cam/valve cover seals.

## **Correction**

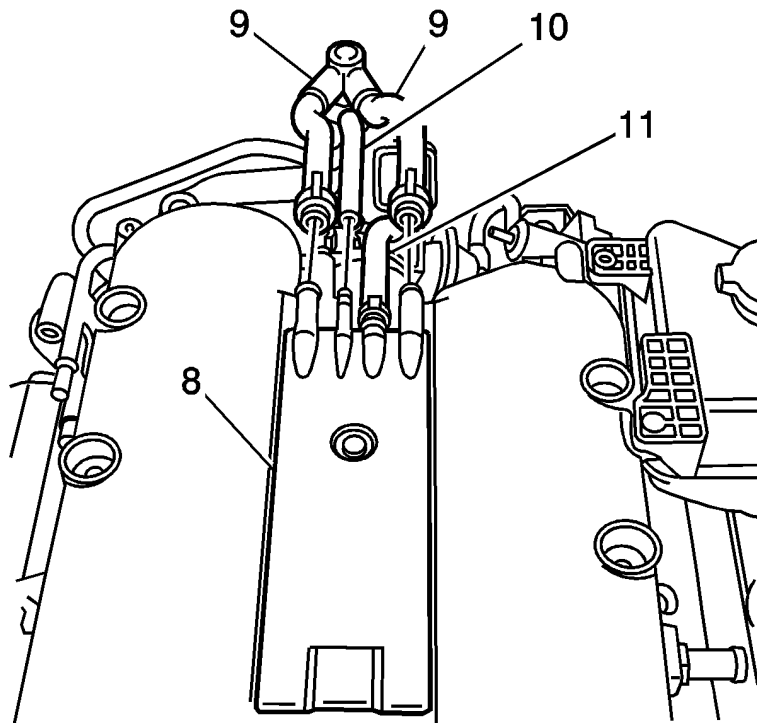
In order to keep the water from accumulating and freezing in the ventilation system, install the Positive Crankcase Ventilation (PCV) Hose Kit, P/N 55558592, and Oil Filler Cap, P/N 12589430. Refer to the repair procedure in this bulletin.



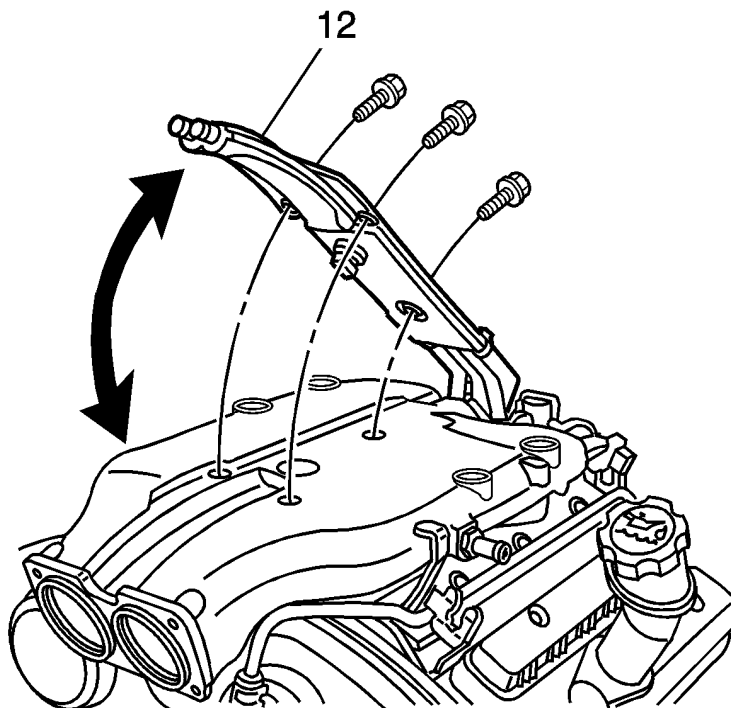
### **PCV Hose Kit, P/N 5558592, and Oil Filler Cap, P/N 12589430**

1. Intake Manifold Shield-ID No.5558589
2. Screws (Qty 3)-ID No.11057371
3. Oil Filler Cap-P/N 12589430
4. Oil Filler Tube-ID No.5558591
5. PCV Hoses-ID No.5558590
6. Seal/O-ring-ID No.90467543
7. Hose Clamps (Qty 2)-ID No.90298229

### **[Repair Procedure](#)**



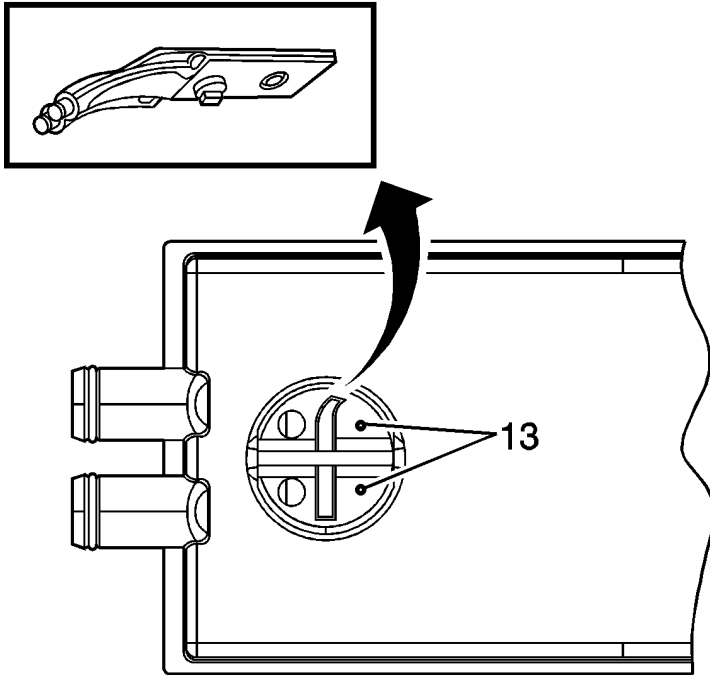
1. From the primary engine PCV vent hose adapter (8), disconnect the following:
  - A. The crankcase ventilation fresh air (outboard) hoses (9).
  - B. The dirty air hose (10).
  - C. The evaporative emission (EVAP) canister purge valve vacuum hose (11).



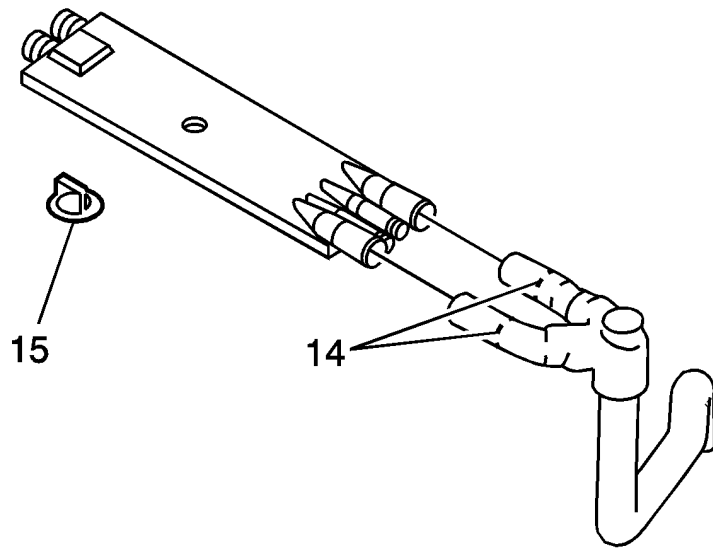


2. Remove the three bolts securing the primary and secondary engine vent hose adapters.
3. Remove the primary and secondary engine vent hose adapters. Discard the secondary vent hose adapter (12).

**Important:** Ensure the intake plenum opening is covered.



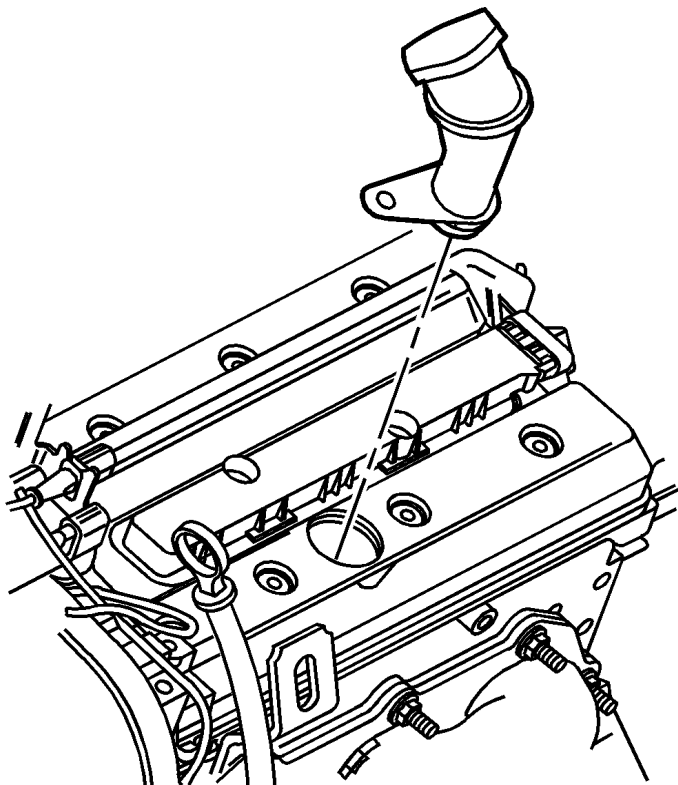
4. On the bottom side of the primary vent hose adapter, enlarge the two existing 1 mm (.04 in) holes (13) to 4 mm (0.2 in). Ensure all debris is removed.



5. Install new seal (15), ID No. 90467543, on the bottom side of the primary vent hose adapter.
6. On each of the fresh air (outboard hoses (14)), measure and place a mark 38 mm (1.5 in) back from the end of each hose.
7. At each mark, cut through the hose. Ensure all debris is removed.
8. Connect and clamp the inboard hoses (dirty air and evaporative emission (EVAP) canister purge valve vacuum hoses) to the primary engine PCV vent hose adapter.
9. With the label side down, use the two clamps, ID No. 90298229, to attach the two tubes of the new secondary engine PCV vent hose adapter, ID No. 55558590, to the two fresh air (outboard) hoses.
10. Install the new secondary engine PCV vent hose adapter to the back of the throttle body and intake plenum.
11. Install the primary hose adapter to the new secondary hose adapter. Ensure the secondary adapter hoses lay on top of the primary adapter.
12. Ensure the primary hose adapter (with the enlarged holes and new seal) is positioned over the intake plenum opening.
13. Over the hoses and tubes of both adapters, install the new shield, ID No. 55558589, to the intake plenum.
14. Install the three new screws, ID No. 11057371, securing the new shield to the intake plenum.

### **Tighten**

Tighten the screws to 8 Nm (71 lb in).



15. Remove the existing oil filler cap and oil filler tube. Discard both.
16. Install the new oil filler tube, ID No. 55558591, and the new oil filler cap, P/N 12589430.

### Parts Information

Part Number	Description
55558592	Hose Kit-PCV
12589430	Cap Asm-Oil Filler

Parts are currently available from GMSPO.

### Warranty Information

For vehicles repaired under warranty, use:

Labor Operation	Description	Labor Time

J7507\*

Engine PCV Hose Kit-Install

0.4 hr

\*This is a unique labor operation to be used only with this bulletin.

GM bulletins are intended for use by professional technicians, NOT a "do-it-yourselfer". They are written to inform these technicians of conditions that may occur on some vehicles, or to provide information that could assist in the proper service of a vehicle. Properly trained technicians have the equipment, tools, safety instructions, and know-how to do a job properly and safely. If a condition is described, DO NOT assume that the bulletin applies to your vehicle, or that your vehicle will have that condition. See your GM dealer for information on whether your vehicle may benefit from the information.



WE SUPPORT  
VOLUNTARY  
TECHNICIAN  
CERTIFICATION

© Copyright General Motors Corporation. All Rights Reserved.

---

**Document ID# 1644918**  
**2004 Cadillac CTS**