



**PERFORMANCE**



[CrateEngineDepot.com](http://CrateEngineDepot.com)

Grayslake, IL

877-441-5150

[www.crateenginedepot.com](http://www.crateenginedepot.com)

# LS3 6.2L

P/N 19301326 ■ 430 hp @ 5,900 rpm ■ 424 lb.-ft. @ 4,600 rpm

**Direct from the Corvette, Camaro, and Chevy SS to your project vehicle!**

- 430 Horsepower and 424 lb.-ft. Torque
- Cast Aluminum Block with 6-Bolt, Cross-Bolted Mains
- High-Lift Hydraulic-Roller Camshaft with .551" / .522" Lift
- 10.7:1 Compression Ratio
- L92-Type Rectangular Port Cylinder Heads
- Chevrolet Performance Crate Engines include a 24-Month or 50,000-Mile/80,000-Kilometer Limited Warranty



Crate Engine Only: [See Site for Pricing](#)

*Not all items shown are included in all crate engine levels. Prices subject to change. See dealer for details.*

## LS3 6.2L TECH SPECS

<b>Part Number:</b>	19301326	<b>Cylinder Heads (P/N 12629063):</b>	Aluminum L92-style port; as cast with 68cc chambers
<b>Engine Type:</b>	LS-Series Gen IV Small-Block V-8	<b>Valve Size (in):</b>	2.165 intake / 1.590 exhaust
<b>Displacement (cu in):</b>	376 cu in (6.2L)	<b>Compression Ratio:</b>	10.7:1
<b>Bore x Stroke (in):</b>	4.065 x 3.622 (103.25 x 92mm)	<b>Rocker Arms (P/N 12569167 int):</b>	Investment-cast, roller trunnion
<b>Block (P/N 12623967):</b>	Cast-aluminum with 6-bolt, cross-bolted main caps	<b>Rocker Arms (P/N 10214664 exh):</b>	Investment-cast, roller trunnion
<b>Crankshaft (P/N 12597569):</b>	Nodular iron	<b>Rocker Arm Ratio:</b>	1.7:1
<b>Connecting Rods (P/N 12607475):</b>	Powdered metal	<b>Recommended Fuel:</b>	92 octane
<b>Pistons (P/N 19207287):</b>	Hypereutectic aluminum	<b>Maximum Recommended rpm:</b>	6,600
<b>Camshaft Type (P/N 12603844):</b>	Hydraulic roller	<b>Reluctor Wheel:</b>	58X
<b>Valve Lift (in):</b>	.551" intake / .522" exhaust	<b>Balanced:</b>	Internal
<b>Camshaft Duration (@.050 in):</b>	204° intake / 211° exhaust		

[www.crateenginedepot.com](http://www.crateenginedepot.com)



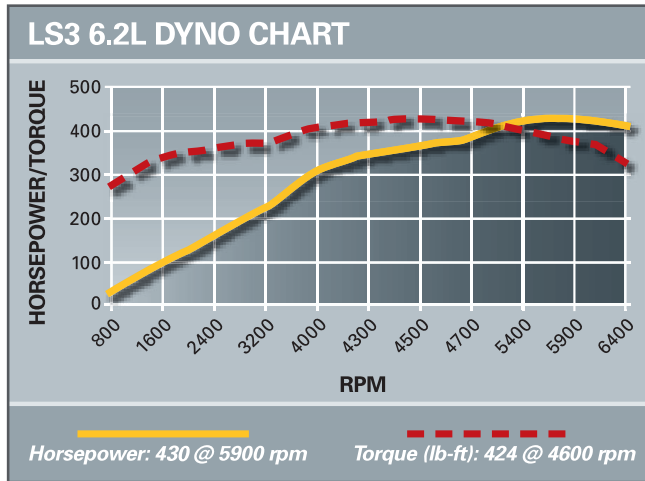
**PERFORMANCE**



# PERFORMANCE

# LS3 6.2L

## Additional Components



## BIG HORSEPOWER IN A CONVENIENT PACKAGE

That's the gist of the Chevrolet Performance Crate Engine program – the most comprehensive line of performance engines, ready for everything from the street to the strip. Offering packages from short blocks to turn key engines, in a variety of displacements and horsepower/torque ratings, we have something for every enthusiast.



Check out our entire selection in the Chevrolet Performance Parts catalog.

## E-ROD SYSTEM — LS3 6.2L

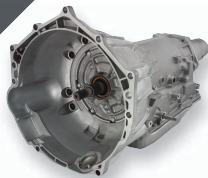


### Emissions compliant – CARB – E.O. number D-126-32

This system meets California's aftermarket requirements for pre-OBD-II vehicles and delivers high-performance with low emissions. The LS3 engine is built with components designed for high-performance and longevity. It's the perfect complement for a street rod or special-construction sports car.

Each engine requires a front-end accessory drive system suitable to the vehicle. The instruction manual includes recommendations for the accessory drive kit, as well as the transmission, gear ratios and more.

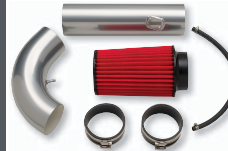
## SELECT THE PARTS BELOW TO FINISH YOUR CRATE ENGINE AND GET RUNNING IN LESS TIME!



**19260380**  
Hydra-Matic 4L65-E  
Four-Speed Automatic  
Transmission



**19302405**  
Transmission  
Controller



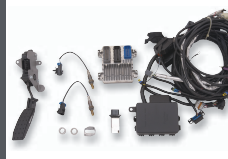
**19301246**  
Air Inlet Kit for LS-  
Based Crate Engine  
Installation



**19299802**  
SuperMatic™  
Torque Converter



**19155067**  
Corvette Accessory  
Drive Kit



**19258270**  
LS3 Controller Kit



Chevrolet Performance Crate Engines include a 24-month or 50,000-mile/80,000-kilometer limited warranty.



Chevrolet Performance *does not* utilize any used or remanufactured parts in this crate engine, except for the starter, alternator and power steering pump.

[www.crateenginedepot.com](http://www.crateenginedepot.com)



# PERFORMANCE

Every effort is made to make this sell sheet comprehensive and factual. We reserve the right, however, to make changes at any time, without notice, to materials, equipment, specifications, and availability. Specifications, dimensions, measurements, ratings, and other numbers are based upon design and engineering information, prototypes and laboratory tests. Since some information may have been updated since the time of printing, please check with your dealer for complete details.