



CrateEngineDepot.com

Grayslake, IL

877-441-5150

www.crateenginedepot.com

ZZ572/620 Deluxe

P/N 19201333 • 620 hp @ 5,500 rpm • 650 lb.-ft. @ 4,500 rpm

The most powerful Big-Block street engine from Chevrolet Performance!

- Cast-Iron Cylinder Block with 4-Bolt Mains
- Forged Steel Crankshaft
- Forged Steel, Shot-Peened Connecting Rods
- Forged Aluminum Pistons
- Hydraulic Roller Camshaft with .632"/.632" Lift
- Large Valves – 2.250" Intake; 1.880" Exhaust
- Aluminum, Rectangular-Port Cylinder Heads
- 850 CFM Holley Carburetor
- 620 HP/650 lb.-ft. Torque



Crate Engine Only: [See Site for Pricing](#)

Not all items shown are included in all crate engine levels. Prices subject to change. See dealer for details.

ZZ572/620 DELUXE TECH SPECS

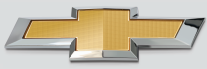
Part Number:	19201333	Compression Ratio:	9.6:1
Engine Type:	Chevy Tall Deck Big-Block V-8	Rocker Arms (P/N 12361323):	Aluminum roller style
Displacement (cu in):	572	Rocker Arm Ratio:	1.7:1
Bore x Stroke (in):	4.560 x 4.375	Distributor (P/N 88961867):	HEI
Block (P/N 19212195):	Cast-iron with 4-bolt main caps	Carburetor (P/N 19170095):	850-cfm
Crankshaft (P/N 88961554):	Forged steel	Water Pump (P/N 19168602):	Aluminum, short-style
Connecting Rods (P/N 88962926):	Forged steel, shot peened	Spark Plugs and Wires:	Included
Pistons (P/N 88962925):	Forged aluminum	Flexplate (P/N 12561217):	14"
Camshaft Type (P/N 19210721):	Hydraulic roller	Recommended Fuel:	92 octane
Camshaft Lift (in):	.632 intake / .632 exhaust	Ignition Timing:	Base 8° BTDC, 36° Total
Camshaft Duration (@.050 in):	254° intake / 264° exhaust	Maximum Recommended rpm:	6,000
Cylinder Heads (P/N 12499255):	Aluminum rectangular port, 118cc chambers	Balanced:	Internal
Valve Size (in):	2.250 intake / 1.880 exhaust; stainless steel		

NOTE: Distributor with melonized steel gear **MUST** be used with long-blocks and Partial engines with steel camshafts, or engine damage will occur.

www.crateenginedepot.com



PERFORMANCE

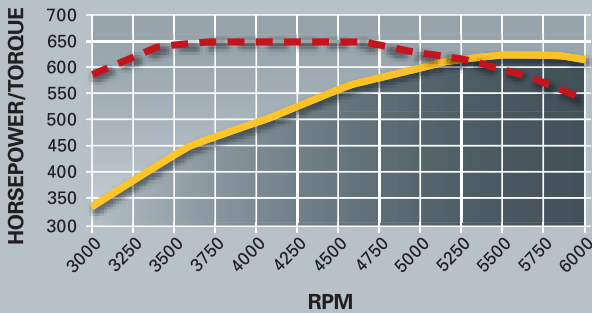


PERFORMANCE

ZZ572/620 Deluxe

Additional Components

ZZ572/620 DYNO CHART



Horsepower: 620 @ 5500 rpm

Torque (lb-ft): 650 @ 4500 rpm

BIG HORSEPOWER IN A CONVENIENT PACKAGE

That's the gist of the Chevrolet Performance Crate Engine program – the most comprehensive line of performance engines, ready for everything from the street to the strip. Offering packages from short blocks to turn key engines, in a variety of displacements and horsepower/torque ratings, we have something for every enthusiast.

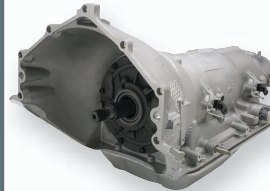
Check out our entire selection in the Chevrolet Performance Parts catalog.



OTHER ENGINE AND TRANSMISSION OPTIONS FOR YOUR PROJECT

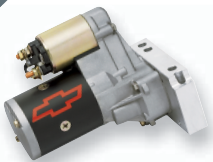


12498792
ZZ572/620 Base Engine
The 620 features rectangular-port aluminum cylinder heads that deliver 9.6:1 compression ratio in a pump-gas-friendly package.



19300175
SuperMatic™ 4L85-E Four-Speed Transmission
Direct bolt-on for Gen I Small-Block and all Big-Blocks.

SELECT THE PARTS BELOW TO FINISH YOUR CRATE ENGINE AND GET RUNNING IN LESS TIME!



12361146
High Torque Mini Starter



19299805
Torque Converter



19212657
Transmission Controller



19172805
Serpentine Accessory Drive Belt System With Air Conditioning



12342024
Chrome Water Neck



12341999
Fuel Pump Block-Off Plate



Chevrolet Performance Crate Engines include a 24-month or 50,000-mile/80,000-kilometer limited warranty.



Chevrolet Performance *does not* utilize any used or remanufactured parts in this crate engine, except for the starter, alternator and power steering pump.

www.crateenginedepot.com



PERFORMANCE

Every effort is made to make this sell sheet comprehensive and factual. We reserve the right, however, to make changes at any time, without notice, to materials, equipment, specifications, and availability. Specifications, dimensions, measurements, ratings, and other numbers are based upon design and engineering information, prototypes and laboratory tests. Since some information may have been updated since the time of printing, please check with your dealer for complete details.