

# PERFORMANCE

# ZZ502/502

# Deluxe

P/N 19201332 ■ 502 hp @ 5,200 rpm ■ 567 lb.-ft. @ 4,200 rpm



CrateEngineDepot.com

Grayslake, IL

877-441-5150

www.crateenginedepot.com

## Our most popular Big-Block crate engine for the street and strip!

- Cast-Iron Cylinder Block with 4-Bolt Mains
- High-Flow, Oval-Port Cylinder Heads
- Forged Steel Crankshaft
- Hydraulic Roller Camshaft
- Forged Aluminum Pistons
- 10:1 Pump-Gas-Friendly Compression Ratio
- Chevrolet Performance Crate Engines include a 24-Month or 50,000-Mile/80,000-Kilometer Limited Warranty



Crate Engine Only: [See Site for Pricing](#)

*Not all items shown are included in all crate engine levels. Prices subject to change. See dealer for details.*

### ZZ502/502 DELUXE TECH SPECS

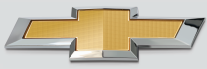
<b>Part Number:</b>	19201332	<b>Rocker Arms (P/N 12368082):</b>	Stamped steel
<b>Displacement (cu in):</b>	502	<b>Rocker Arm Ratio:</b>	1.7:1
<b>Bore x Stroke (in):</b>	4.470 x 4.000	<b>Distributor (P/N 93440806):</b>	HEI type
<b>Block (P/N 19170540):</b>	Cast-iron with 4-bolt main caps	<b>Carburetor (P/N 19170094):</b>	870-cfm
<b>Crankshaft (P/N 10183723):</b>	Forged steel	<b>Water Pump (P/N 19168602):</b>	Aluminum, short-style
<b>Connecting Rods (P/N 19170198):</b>	Forged steel, shot peened	<b>Spark Plugs and Wires:</b>	Included
<b>Pistons (P/N 12533507):</b>	Forged aluminum	<b>Starter (P/N 12606096):</b>	Included
<b>Camshaft Type (P/N 12366543):</b>	Hydraulic roller	<b>Flexplate (P/N 10185034):</b>	14"
<b>Camshaft Lift (in):</b>	.527 intake / .544 exhaust	<b>Recommended Fuel:</b>	92 octane
<b>Camshaft Duration (@.050 in):</b>	224° intake / 234° exhaust	<b>Ignition Timing:</b>	Base 8° BTDC, 30° Total
<b>Cylinder Heads (P/N 12363390):</b>	Aluminum oval port; 110cc chambers	<b>Maximum Recommended rpm:</b>	5,800
<b>Valve Size (in):</b>	2.250 intake / 1.880 exhaust; stainless steel	<b>Balanced:</b>	External
<b>Compression Ratio:</b>	9.6:1		

**NOTE:** Distributor with melonized steel gear **MUST** be used with long-blocks and Partial engines with steel camshafts, or engine damage will occur.

www.crateenginedepot.com



PERFORMANCE

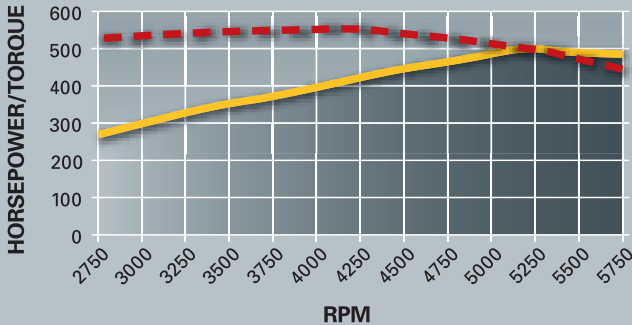


# PERFORMANCE

# ZZ502/502 Deluxe

## Additional Components

### ZZ502/502 DYNO CHART



Horsepower: 502 @ 5200 rpm

Torque (lb-ft): 567 @ 4200 rpm

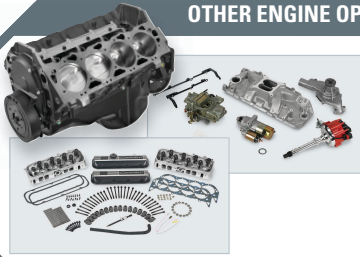
### BIG HORSEPOWER IN A CONVENIENT PACKAGE

That's the gist of the Chevrolet Performance Crate Engine program – the most comprehensive line of performance engines, ready for everything from the street to the strip. Offering packages from short blocks to turn key engines, in a variety of displacements and horsepower/torque ratings, we have something for every enthusiast.

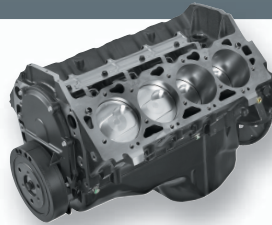
Check out our entire selection in the Chevrolet Performance Parts catalog.



### OTHER ENGINE OPTIONS FOR YOUR PROJECT

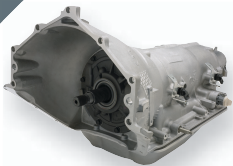


**12371171**  
**ZZ502 Deluxe Kit**  
Chevrolet Performance offers the ZZ502 Deluxe kit for those who want to build their own deluxe engine.



**12568782**  
**502 Partial Engine**  
This brand-new Partial engine includes forged reciprocating components, as well as the balancer, oil pan and timing chain set.

### SELECT THE PARTS BELOW TO FINISH YOUR RAM JET 350 CRATE ENGINE AND GET IT RUNNING IN LESS TIME!



**19300175**  
**SuperMatic™**  
**4L85-E Four-Speed**  
**Transmission**



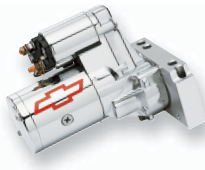
**19212657**  
**Transmission**  
**Controller**



**12342024**  
**Chrome Water Neck**



**19172805**  
**Serpentine Accessory**  
**Drive Belt System**  
**With Air Conditioning**



**12363128**  
**Chrome High**  
**Torque Mini Starter**



**19299805**  
**Torque Converter**



Chevrolet Performance Crate Engines include a 24-month or 50,000-mile/80,000-kilometer limited warranty.



Chevrolet Performance does not utilize any used or remanufactured parts in this crate engine, except for the starter, alternator and power steering pump.

[www.crateenginedepot.com](http://www.crateenginedepot.com)



# PERFORMANCE

Every effort is made to make this sell sheet comprehensive and factual. We reserve the right, however, to make changes at any time, without notice, to materials, equipment, specifications, and availability. Specifications, dimensions, measurements, ratings, and other numbers are based upon design and engineering information, prototypes and laboratory tests. Since some information may have been updated since the time of printing, please check with your dealer for complete details.