



PERFORMANCE



ZZ427/480

CrateEngineDepot.com

Grayslake, IL

877-441-5150

www.crateenginedepot.com

P/N 19166393 ■ 480 hp @ 5,800 rpm ■ 490 lb.-ft. @ 3,800 rpm

The Classic L88 427 updated for the 21st Century!

- Cast-Iron Cylinder Block with 4-Bolt Mains
- High-Flow, Oval-Port Aluminum Cylinder Heads
- Forged Steel Crankshaft
- Hydraulic Roller Camshaft
- Forged Aluminum Pistons
- Forged Steel Rods
- 10:1 Pump-Gas-Friendly Compression Ratio
- Includes 770 CFM Holley Carburetor
- Includes SFI-Certified ATI Dampener



Crate Engine Only: **See Site for Pricing**

Not all items shown are included in all crate engine levels. Prices subject to change. See dealer for details.

ZZ427/480 TECH SPECS

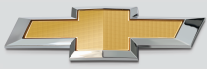
Part Number:	19166393	Compression Ratio:	10.1:1
Engine Type:	Chevy Big-Block V-8	Rocker Arms (P/N 19210726):	Aluminum roller style
Displacement (cu in):	427	Rocker Arm Ratio:	1.7:1
Bore x Stroke (in):	4.250 x 3.750	Distributor (P/N 19212081):	HEI type
Block (P/N 19170538):	Cast-iron with 4-bolt main caps	Carburetor (P/N 19170093):	770-cfm
Crankshaft (P/N 19171620):	Forged steel	Water Pump (P/N 19168602):	Aluminum short-style
Connecting Rods (P/N 19211226):	Forged steel	Spark Plugs and Wires:	Included
Pistons (P/N 19171618):	Forged aluminum	Flexplate (P/N 12561217):	14"
Camshaft Type (P/N 12366543):	Hydraulic roller	Recommended Fuel:	92 octane
Valve Lift (in):	.527 intake / .544 exhaust	Ignition Timing:	Base 10° BTDC, 36° Total
Camshaft Duration (@.050 in):	224° intake / 234° exhaust	Maximum Recommended rpm:	6,400
Cylinder Heads (P/N 19211799):	Aluminum oval port, 110cc chambers	Balanced:	Internal
Valve Size (in):	2.190 intake / 1.880 exhaust		

NOTE: Distributor with melonized steel gear **MUST** be used with long-blocks and Partial engines with steel camshafts, or engine damage will occur.

www.crateenginedepot.com



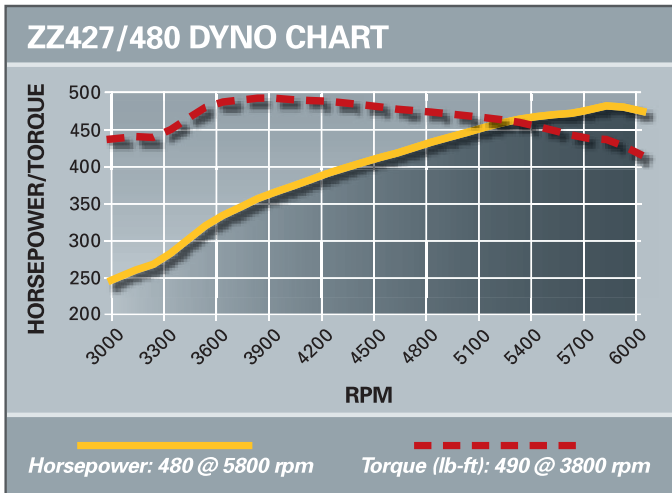
PERFORMANCE



PERFORMANCE

ZZ427/480

Additional Components



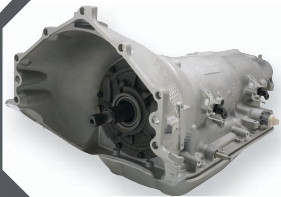
BIG HORSEPOWER IN A CONVENIENT PACKAGE

That's the gist of the Chevrolet Performance Crate Engine program – the most comprehensive line of performance engines, ready for everything from the street to the strip. Offering packages from short blocks to turn key engines, in a variety of displacements and horsepower/torque ratings, we have something for every enthusiast.



Check out our entire selection in the Chevrolet Performance Parts catalog.

SELECT THE PARTS BELOW TO FINISH OFF YOUR CRATE ENGINE AND GET RUNNING IN LESS TIME!



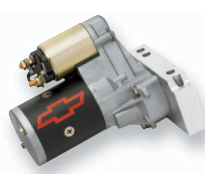
19300175
SuperMatic™ 4L85-E
Four-Speed Transmission
Direct bolt-on for Gen I Small-Block and all Big-Blocks.



19212657
Transmission Controller
Required when using a GM electronically controlled automatic transmission. Includes wiring harness, software and connector for laptop computer.



19172805
Serpentine Accessory
Drive Belt System
With Air Conditioning



12361146
High Torque
Mini Starter



12341999
Fuel Pump
Block-Off Plate



12342024
Chrome
Water Neck



19299805
Torque Converter



12342071
Air Cleaner



Chevrolet Performance Crate Engines include a 24-month or 50,000-mile/80,000-kilometer limited warranty.



Chevrolet Performance *does not* utilize any used or remanufactured parts in this crate engine, except for the starter, alternator and power steering pump.

www.crateenginedepot.com



PERFORMANCE

Every effort is made to make this sell sheet comprehensive and factual. We reserve the right, however, to make changes at any time, without notice, to materials, equipment, specifications, and availability. Specifications, dimensions, measurements, ratings, and other numbers are based upon design and engineering information, prototypes and laboratory tests. Since some information may have been updated since the time of printing, please check with your dealer for complete details.