



CrateEngineDepot.com

Grayslake, IL

877-441-5150

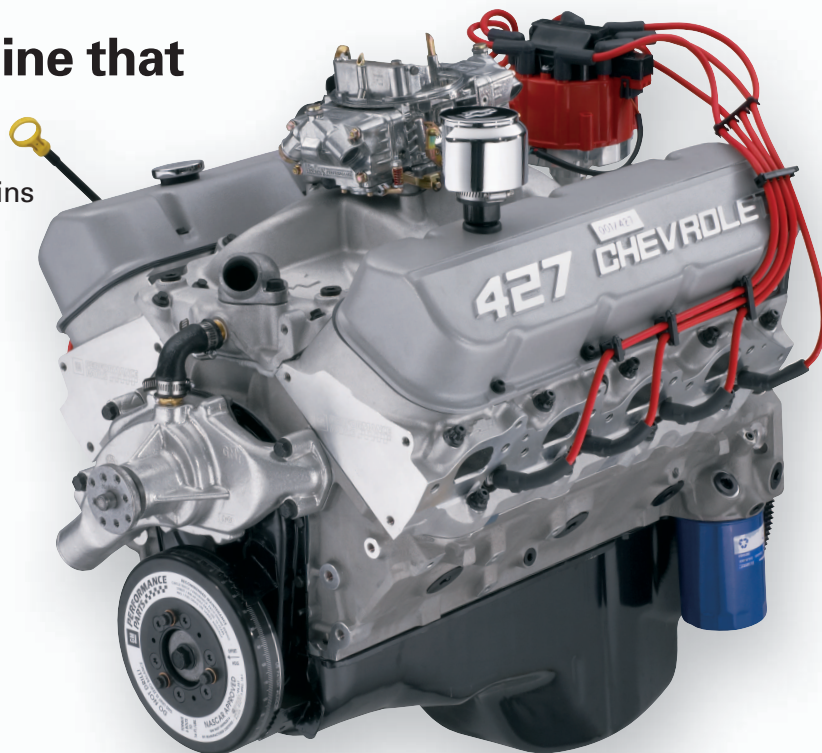
www.crateenginedepot.com

# 427 Anniversary Edition

P/N 19166392 • 430 hp @ 5,800 rpm • 444 lb.-ft. @ 3,800 rpm

## A limited-edition crate engine that honors the legendary ZL1!

- Cast-Aluminum Cylinder Block with 4-Bolt Mains
- Forged Steel Rods and Crankshaft
- Aluminum Oval-Port Cylinder Heads
- Hydraulic Roller-Style Camshaft with .527"/.544" Lift
- Forged Aluminum Pistons
- Chevrolet Performance Crate Engines include a 24-Month or 50,000-Mile/80,000-Kilometer Limited Warranty



Crate Engine Only: See Site for Pricing

Not all items shown are included in all crate engine levels. Prices subject to change. See dealer for details.

### ANNIVERSARY EDITION 427 TECH SPECS

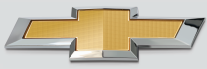
<b>Part Number:</b>	19166392	<b>Valve Size (in):</b>	2.190 intake / 1.880 exhaust
<b>Engine Type:</b>	Aluminum Chevy Big-Block V-8	<b>Compression Ratio:</b>	10.1:1
<b>Displacement (cu in):</b>	427	<b>Rocker Arms (P/N 12361323):</b>	Aluminum roller style
<b>Bore x Stroke (in):</b>	4.250 x 3.750	<b>Rocker Arm Ratio:</b>	1.7:1
<b>Block (P/N 88958696):</b>	Cast-aluminum with 4-bolt main caps	<b>Distributor(P/N 19212081):</b>	HEI type
<b>Crankshaft (P/N 19171620):</b>	Forged steel	<b>Carburetor (P/N 19170093):</b>	770-cfm
<b>Connecting Rods (P/N 19211226):</b>	Forged steel	<b>Water Pump (P/N 19168602):</b>	Aluminum, short-style
<b>Pistons (P/N 19171618):</b>	Forged aluminum	<b>Flexplate (P/N 12561217):</b>	14"
<b>Camshaft Type (P/N 12366543):</b>	Hydraulic roller	<b>Recommended Fuel:</b>	92 octane
<b>Camshaft Lift (in):</b>	.527 intake / .544 exhaust	<b>Ignition Timing:</b>	Base 10° BTDC, 36° Total
<b>Camshaft Duration (@.050 in):</b>		<b>Maximum Recommended rpm:</b>	
<b>Cylinder Heads (P/N 12562920):</b>	Aluminum oval port; 110cc chambers	<b>Balanced:</b>	Internal

**NOTE:** Distributor with melonized steel gear **MUST** be used with long-blocks and Partial engines with steel camshafts, or engine damage will occur.

www.crateenginedepot.com



PERFORMANCE

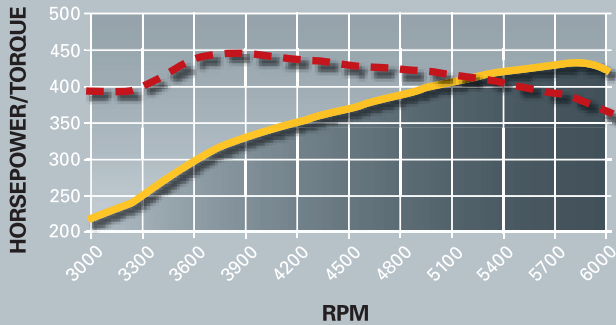


# PERFORMANCE

## 427 Anniversary Edition

### Additional Components

#### ANNIVERSARY 427 DYNO CHART



Horsepower: 430 @ 5800 rpm

Torque (lb-ft): 444 @ 3800 rpm

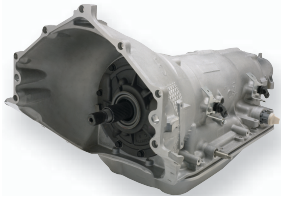
### BIG HORSEPOWER IN A CONVENIENT PACKAGE

That's the gist of the Chevrolet Performance Crate Engine program – the most comprehensive line of performance engines, ready for everything from the street to the strip. Offering packages from short blocks to turn key engines, in a variety of displacements and horsepower/torque ratings, we have something for every enthusiast.



Check out our entire selection in the Chevrolet Performance Parts catalog.

#### OTHER ENGINE AND TRANSMISSION OPTIONS FOR YOUR PROJECT



**19300175**  
**SuperMatic™ 4L85-E**  
**Four-Speed Transmission**  
Direct bolt-on for Gen I Small-Block and all Big-Blocks.



**19212657**  
**Transmission Controller**  
Required when using a GM electronically controlled automatic transmission. Includes wiring harness, software and connector for laptop computer.

#### SELECT THE PARTS BELOW TO FINISH OFF YOUR CRATE ENGINE AND GET RUNNING IN LESS TIME!



**19299805**  
**Torque Converter**



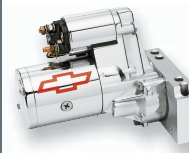
**19172805**  
**Serpentine Accessory Drive Belt System with Air Conditioning**



**12342071**  
**Air Cleaner**



**12342024**  
**Chrome Water Neck**



**12363128**  
**Chrome High Torque Mini Starter**



Chevrolet Performance Crate Engines include a 24-month or 50,000-mile/80,000-kilometer limited warranty.



Chevrolet Performance does not utilize any used or remanufactured parts in this crate engine, except for the starter, alternator and power steering pump.

[www.crateenginedepot.com](http://www.crateenginedepot.com)



# PERFORMANCE

Every effort is made to make this sell sheet comprehensive and factual. We reserve the right, however, to make changes at any time, without notice, to materials, equipment, specifications, and availability. Specifications, dimensions, measurements, ratings, and other numbers are based upon design and engineering information, prototypes and laboratory tests. Since some information may have been updated since the time of printing, please check with your dealer for complete details.